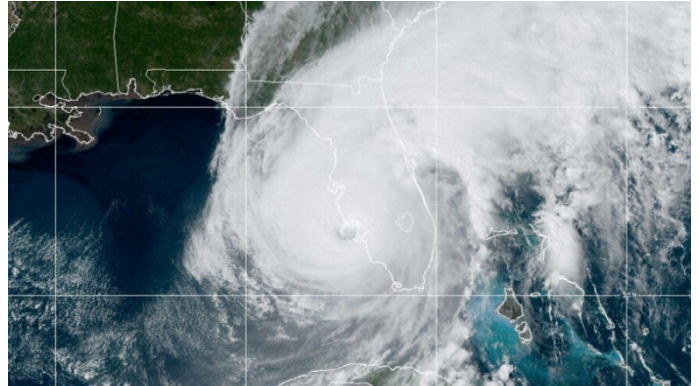




Hurricane Ian – Special Edition

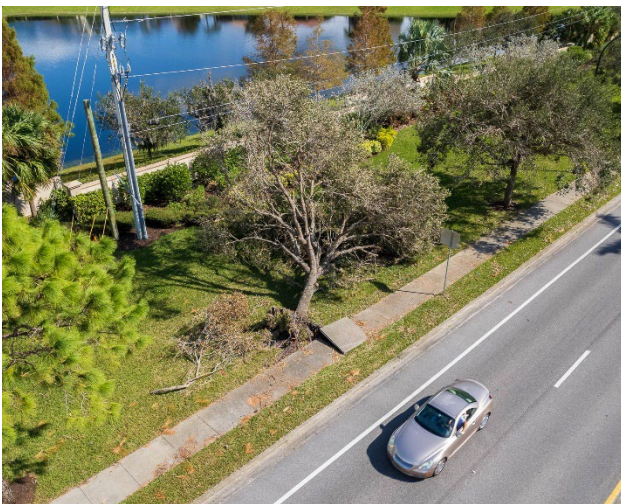
Hurricane Ian, a category 4 storm with sustained winds over 150 mph, made landfall Wednesday, September 28th. in southwest Florida's Lee County. While the eye of the storm was far away from Palmer Ranch, its effects were still felt on the ranch.

The National Weather Service is still compiling its official report on the storm; however, local weather stations reported winds in our area of at least 80 mph and rainfall amounts from as little as 7 inches and as much as 16 inches in some areas. Properties closer to the center of the storm felt stronger impacts.



Satellite imagery of Hurricane Ian at landfall in southwest Florida

Ian left behind damage we'll be talking about for years to come. On the ranch, damage ranged from fallen trees, pool screens ripped out and minor roof damage. Thankfully, we've had no reports of flooded homes, which is due in large part to the design of our drainage system. Designed to withstand a 100-year flood, the drainage system handled what some are reporting as a 500-year flood event.



East side of Honore, just south of Sandhill Preserve

Damage to the common areas of the ranch included numerous fallen Oak Trees, some of which were 100+ years old. Crews were on site as quickly as possible to address trees that were blocking roadways and will continue the clean up work in the days/weeks ahead.

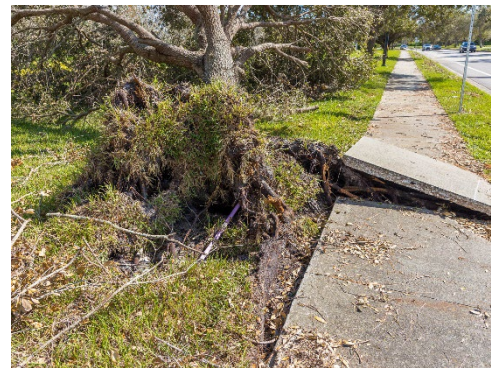
At this time, we do not foresee a special assessment, from the Master Association, for damage due to Hurricane Ian. We budget for Operating Contingencies and will use those funds to pay for debris cleanup and repairs to the property. It is highly unlikely we'll be replacing the large trees that fell throughout the property as nearly all are county trees, and many of the tree farms were decimated with the storm and they were already low on inventory before this tragedy.

Sidewalk repairs along the county roadways will be coordinated through Sarasota County. Please use extreme caution until these areas are repaired!

While we all want to help others in need, before you contribute financially to an organization, do your research first.

As a gentle reminder, hurricane season runs until November 30th. Remember to replenish your hurricane supplies as necessary!

Further updates will be included in our monthly *On the Ranch Newsletter*, so make sure you're subscribed!



East side of Honore, just south of Sandhill Preserve